

Whatman FTA[®] DNA Archiving

Analyze blood and buccal DNA after years of room temperature storage.

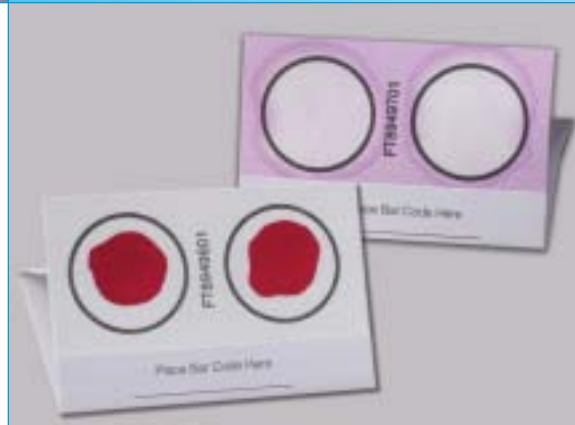
When collecting blood and buccal samples for DNA analysis, Whatman FTA[®] Cards offer the most reliable choice for long-term sample storage. Results from ongoing studies continue to show blood and buccal samples applied to FTA Cards—which employ patented Whatman FTA technology—remain stable for years at room temperature. Blood samples have been successfully analyzed after 14 years; buccal samples are stable for 5 years and counting. Whether you are analyzing DNA immediately or after a decade, FTA Cards are ideal for genetic identification.

Features and Benefits

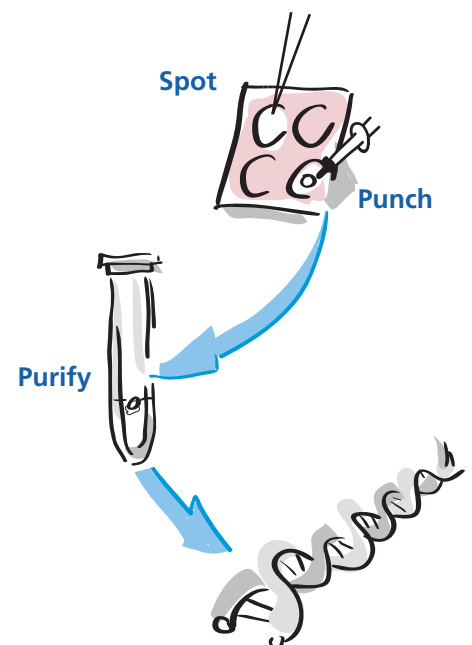
- **Long-term stability** Blood samples are stable up to 14 years; buccal samples are stable up to 5 years and counting.
- **Safe archiving and shipping** Samples can be stored at room temperature, eliminating the need for costly refrigeration, and can be shipped by regular mail.
- **Rapid purification** DNA is purified with two mild buffers—no expensive kits are needed.
- **Fast, easy collection** Blood and buccal samples are immediately stabilized when applied to card, making field collection convenient.
- **User safety** Potentially harmful pathogens are inactivated.

Applications

- STR analysis
- Genetic identification
- Diagnostic and clinical applications
- Animal breeding studies



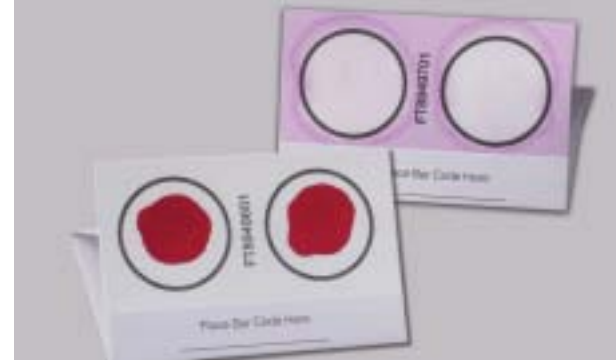
Three easy steps to pure DNA



Whatman[®]

TESTING PROCEDURE

- **Outside Lab** Sections from both the blood and buccal samples were mailed to an outside lab that specializes in genetic identification testing.
- **Standard Punch Processing** Punches (1.2 mm diameter for both blood and buccal samples) were manually taken from the sample-sections and were washed according to standard protocols.
- **Amplification** Processed punches from each sample were amplified using ABI AmpfISTR® Profiler™ and Cofiler™ Systems. The reaction volume was 10 µL and the cycle number was reduced to 24 for all reactions.
- **Detection** A 10 µL sample preparation (1 µL amplified sample, 0.5 µL GS ROX 500, 8.5 µL de-ionized formamide) was detected using an ABI 3100 Genetic Analyzer. The default injection parameters were modified for the following: 3kV injection voltage and 5 second injection time for buccal samples; 15 seconds for blood samples.
- **Analysis** GeneScan® Analysis version 3.7.1 was used to analyze the raw data. Genotyper® version 3.7 was used to assign the allele calls.



The STR profiles obtained from the 14-year blood and 5-year buccal samples demonstrate that FTA both protects the DNA during storage and provides a rapid, effective purification method.

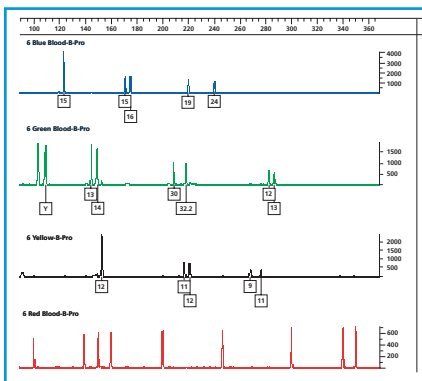


Figure 1: STR analysis of 14-year-old blood stains on FTA using the ABI Profiler amplification system. The top profile (blue, fam dye) represents loci D3S1358, vWA and FGA. The next profile (green, joe dye) represents the amelogenin “X/Y” gene, D8S1179, D21S11 and D18S51. The next profile (yellow, ned dye) represents D5S818, D13S317 and D7S820. The bottom profile is the red, rox dye which serves as an internal standard.

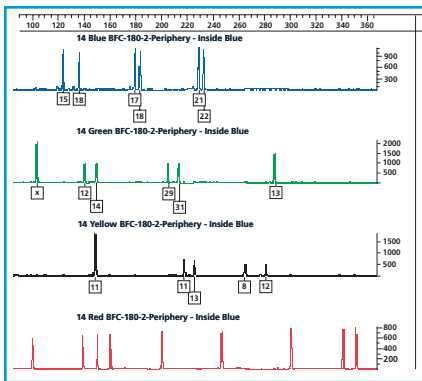


Figure 2: STR analysis of 5-year-old buccal samples on FTA using the ABI Profiler amplification system. The markers are the same as those described in Figure 1.

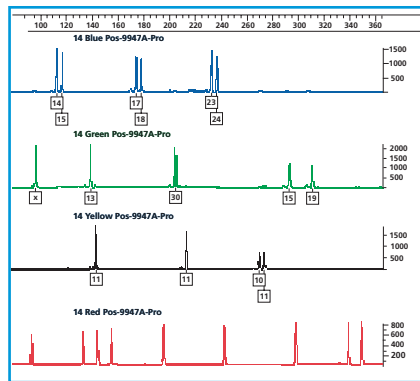


Figure 3: STR analysis of positive control DNA (9947A) supplied with the ABI Profiler amplification system. The markers are the same as those described in Figure 1.

WHATMAN CATALOG ORDERING INFORMATION

Whatman Catalog Number	Standard Unit	Qty./Pack
WB120205	FTA Classic Card (non-indicating)	100
WB120206	FTA Classic Card (indicating)	100
WB120055	FTA Mini Card (non-indicating)	100
WB120056	FTA Mini Card (indicating)	100
WB120210	FTA Micro Card (non-indicating)	100
WB120211	FTA Micro Card (indicating)	100

Whatman Quality

Whatman is a global leader in separations technology and is known in the scientific community for providing innovative Life Science products and solutions. Our instinct for simplification accelerates the rate of discovery, reduces costs and saves time. In order to focus on the unique needs of customers, Whatman is organized into four business development units: LabSciences, BioScience, MedTech-Diagnostics and MedTech-Devices. For more information, visit www.whatman.com.

Whatman and FTA are registered trademarks of the Whatman Group. AmpfISTR, Profiler, Cofiler, GeneScan and Genotyper are registered trademarks of Applied Biosystems.

North America Whatman Inc.
200 Park Avenue
Florham Park, NJ 07932 USA
Technical Support: 1-800-922-0361
Customer Service: 1-800-631-7290
E-mail: info@whatman.com

Europe Whatman International Ltd
Springfield Mill, James Whatman Way
Sandling Road, Maidstone
Kent ME14 2LE UK
Tel: + 44 (0)1622 676670
Fax: + 44 (0)1622 691425
E-mail: information@whatman.com

Japan Whatman Japan KK
Daiwa Ueno Building 1F 6-10
Ueno 5-chome, Taito-ku
Tokyo 110-0005, Japan
Tel: +81 (0)3 3832 6707
Fax: +81 (0)3 3832 6457
E-mail: japaninfo@whatman.com

Asia Pacific Whatman Asia Pacific Pte Ltd
171 Chin Swee Road
#08-01 San Centre
Singapore 169877
Tel: +65 6534 0138
Fax: +65 6534 2166
E-mail: wap@whatman.com

Additional information on FTA products and accessories is available at 1-800-922-0361.

Whatman®
Leaders in Separations Technology
www.whatman.com